



ENTERTAINMENT ENGINEERING, INC.
& TRANSPORTATION INNOVATIONS GROUP
22721 Canyon Lake Drive South
Canyon Lake, California 92587
Phone 818-635-1020 C Phone 818-954-9100 W
www.entenginc.com email kent@entenginc.nu

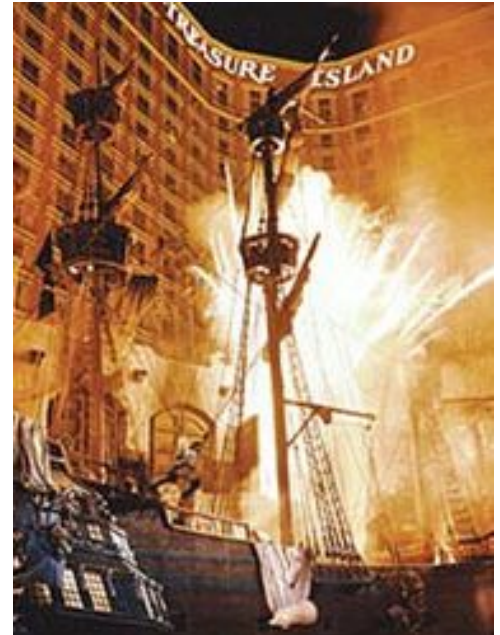


EEI has an incredible capability to successfully create one of a kind devices for show and ride systems, and for customized, themed people movers.

We can work at any level, and can provide 3rd party review for systems designed and built by others, for optimum reliability and safety.

We can also provide turnkey design/build services, and act as the prime contractor or construction and project managers.

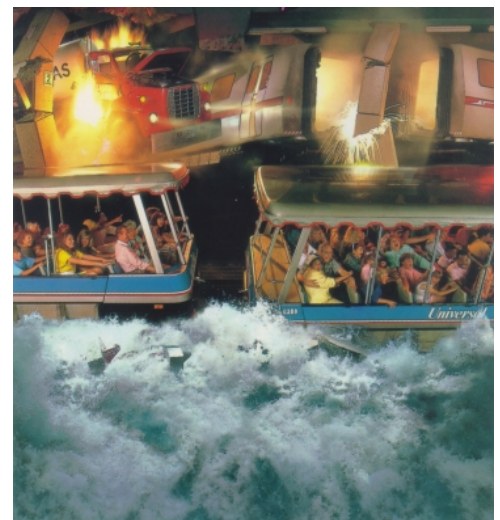
This is a pictorial history of how we have done that work for some of the most famous attractions in the world today. All of the projects that we have participated in have paid off in less than one year, and have been free of expensive maintenance problems.



EEI/TIG PHOTO GALLERY

EEI/TIG played a major role in designing, or engineering, or building the devices shown on the following pages. The collection of photos is organized as follows:

**PEOPLE MOVERS
TROLLEYS
DISNEY
LAS VEGAS
UNIVERSAL
ARTS & ENTERTAINMENT
ARCHITECTURAL SYSTEMS
CALIFORNIA THEAMING
FUTURE PROJECTS
CORPORATE CAPABILITIES**



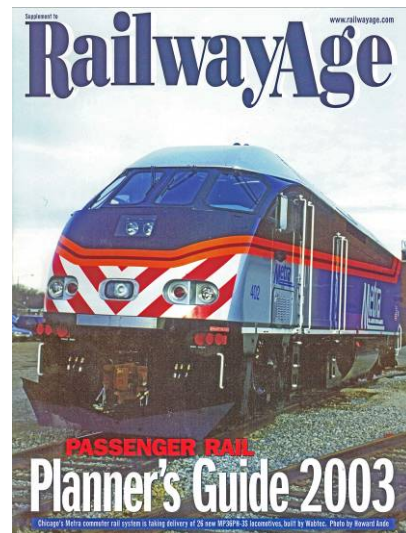
PEOPLE MOVERS are a major plank in the business plan of EEI/TIG. Based upon Walt Disney's concept called "Community Transportation Systems", the objective is to provide Disney type people movers for use in America's cities. To date, the Disney organization has sold only the Wedway People Mover at the Huston Airport, and the first phase monorail in Las Vegas. Mr. Bingham is the Engineer of Record for that monorail project.



APM for San Diego Zoo



Arrowhead Monorail at LA County Fair



Locomotive for Chicago Metra



Tram for San Diego Zoo

The Mark IV Disney monorails were designed and built for the opening of Walt Disney World in 1971. They were retired in 1986 and later sold for use in Las Vegas. EEI was the engineer of record and provided the stress analysis.



TROLLEYS

The Trolley at the Grove shopping mall at the Farmers Market in LA is a famous landmark. Tourists and shoppers visit the Grove just to ride the Trolley. And of course, while there, they also shop and dine at one the many fine restaurants. Rides are free. The Trolley operates every day.



The Farmers Market Trolley is also well known internationally. TIG is currently under contract to design and build two Trolleys for the Puerto Los Cabos Marina in Baja California, adjacent to the famous resort at Cabo San Lucas.



Puerto Los Cabos
san José del Cabo, Baja Mexico



DISNEY PROJECTS

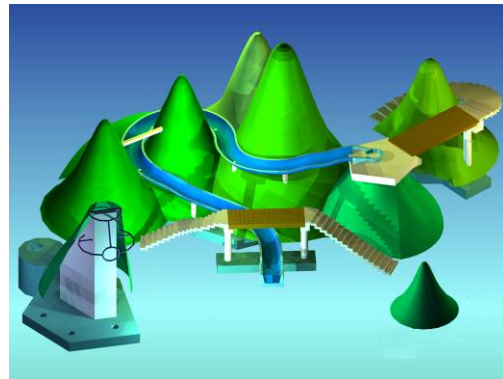
Kent Bingham served Walt Disney Imagineering as Chief Structural Engineer from 1977 thru 1983. In that capacity, he did the preliminary design for all of the structures at EPCOT. His role was to fully integrate all aspects of facility, show, and ride systems.



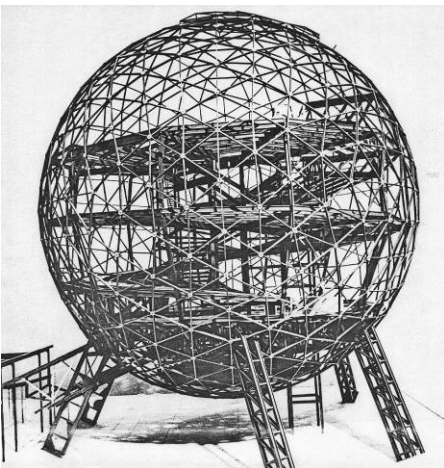
EPCOT full view of construction site.



Sun Disc at California Adventure on left
Dumbo ride expanded from 10 to 16 arms on right



The Peter Pan Village at the Disneyland Hotel



Spaceship Earth plastic model built to help the builder to understand the very complex structural system.

The modern version of Rocket to Mars created for the opening of Euro Disneyland. EEI prepared all of the show and ride drawing packages for that park.

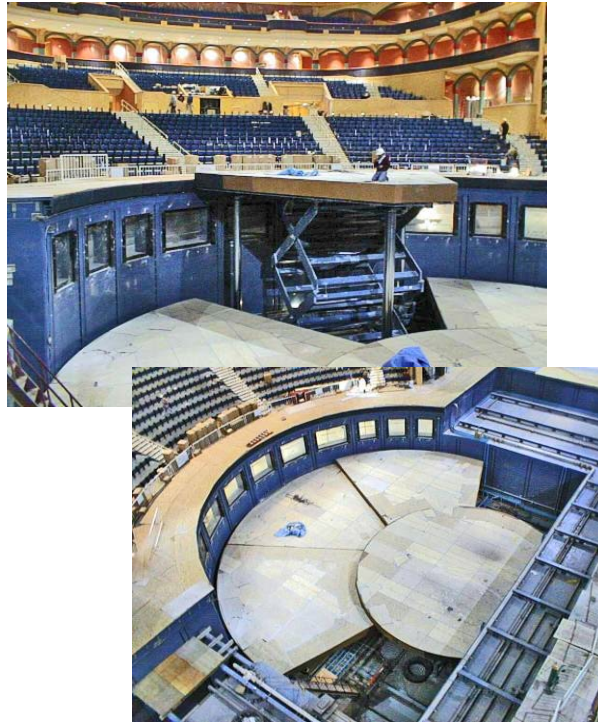


LAS VEGAS

EEl worked on most of the spectacular show systems in Las Vegas during the period from 1993 thru 2001.



Treasure Island Buccaneer Bay
Pirate spectacular



The "O" show at the Bellagio. EEl was structural engineer for the theater building, and helped to develop the underwater stage lift.



Bally's new entry court greatly improved
Pedestrian traffic into the casino,

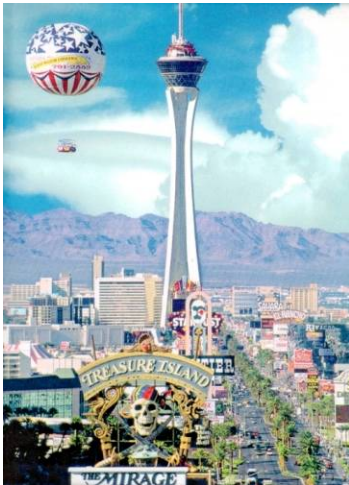


The Star Trek show at the Hilton



The Mardi Gras sky parade
at the Rio

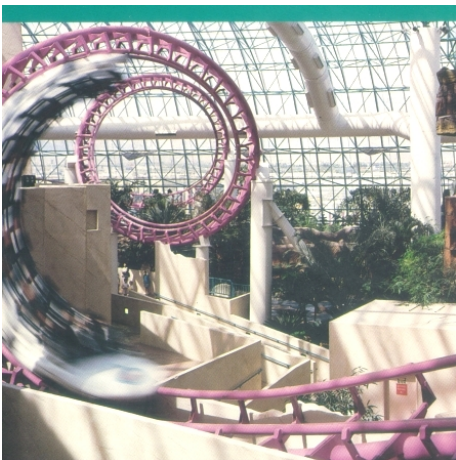
MORE LAS VEGAS



Balloon Ride at New Frontier



Las Vegas Monorail



Grand Slam Canyon at Circus-Circus



Sign structure at Boardwalk Holiday Inn

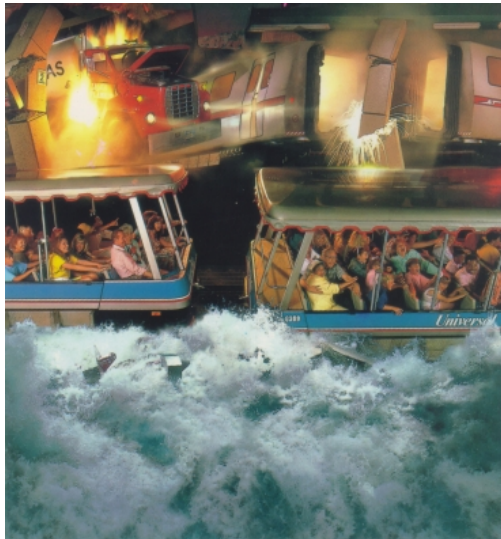


Fremont Street band shell



Elevated RR structures at Buffalo Bill's

UNIVERSAL STUDIOS IN HOLLYWOOD AND ORLANDO



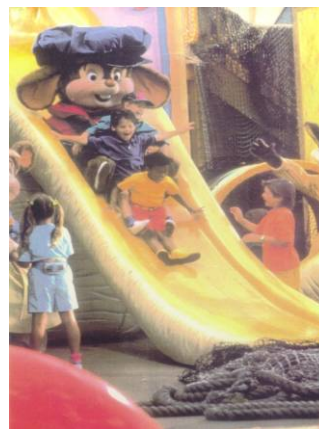
Earthquake - USH



King Kong - USH



Mythos Restaurant - USF



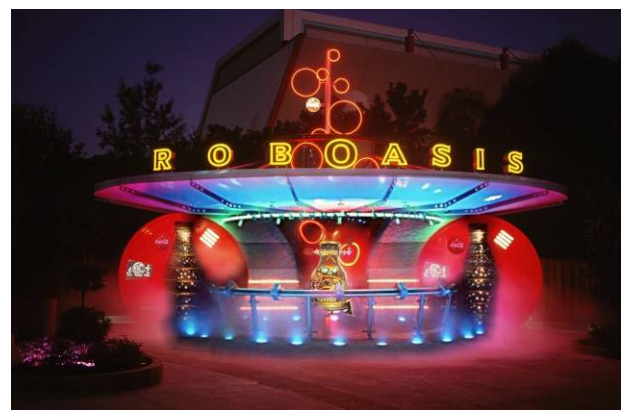
An American Tale – USH



Nascar – City Walk



King Kong - USF



Roboasis animated show - USF

ARTS AND ENTERTAINMENT



Sculpture Garden – Los Angeles



Hollywood Bowl



Experience Music Project - Seattle



Queen Mary – Long Beach



Sony Pictures Studio – Culver City



Warner Bros. Studio Stores

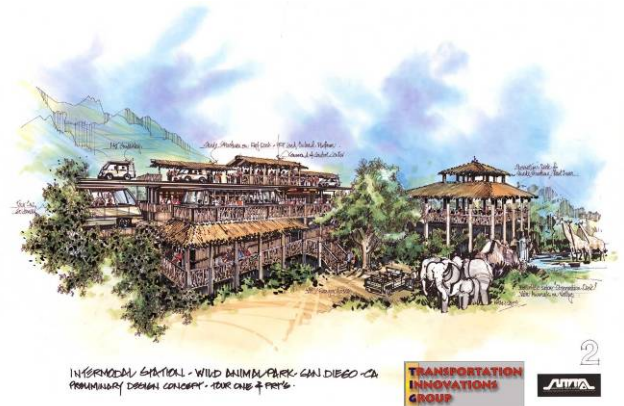
ARCHITECTURAL SYSTEMS



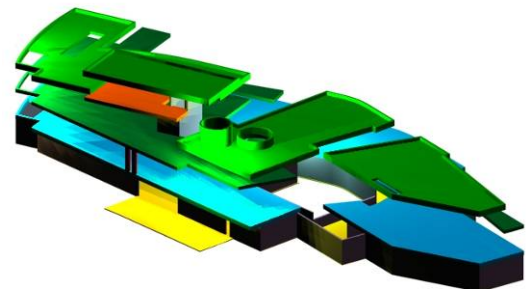
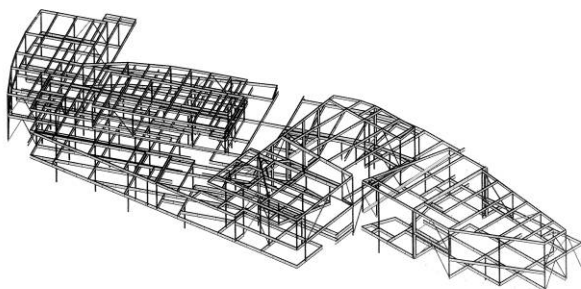
The Gateway Center at Los Angeles' Union Station is an elegant glass half dome



Structural Frame for Kidspace Museum



Concept for Tram tour multi-modal station at the San Diego Zoo.
Designed by Eyoub Khan



Kidspace Museum - Pasadena

CALIFORNIA THEAMING

Jim Stilson, the owner of California Theaming, for many years exclusively used EEI for the structural engineering needed for the many beautiful entertainment systems that he built for Disney and Universal. Here are a few samples of the work that we did together.



The Jelly Fish Parachute Ride
at the California Adventure



Cups and Saucers – City Walk



Parade Float - California Adventure



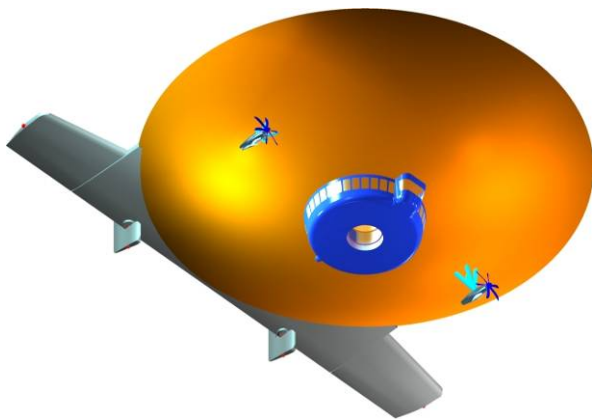
Parade Float - California Adventure

FUTURE PROJECTS

The business plan established by Kent Bingham for EEI and TIG is based upon three projects defined by Walt Disney, but never implemented. They are:

- 1- Community Transportation Services
- 2- EPCOT completion as a live-in community, not just a showcase
- 3- The Mineral King mountain resort in the Disney style

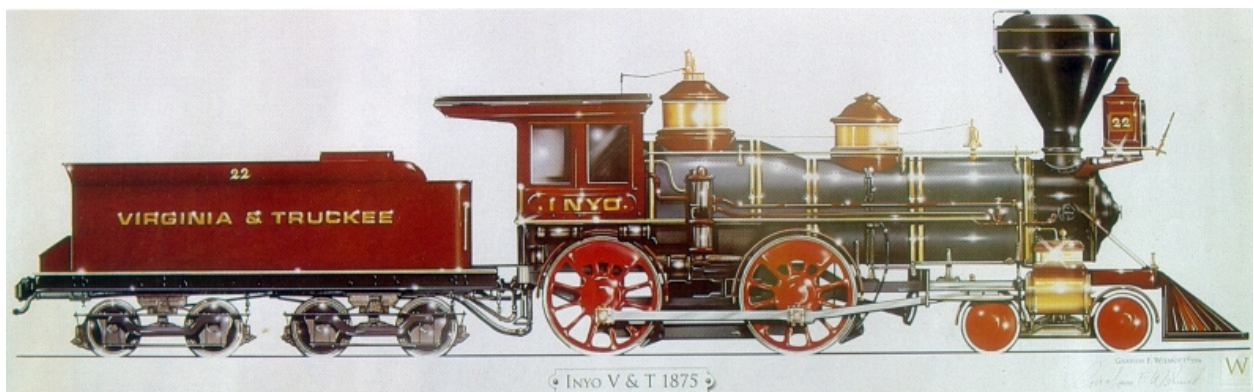
The key to all of this is to evolve EEI into a vehicle manufacturing business. Toward that end, TIG was founded in 2003 as a people mover engineering division of EEI, and TIG manufacturing (TIG/m) was founded in 2004 as an LLC partnership with AVG. You have seen our trolleys and other people movers that we have built above. Here are some people movers that we have been planning, but have not yet been funded.



Our airship which evolved as a solution to the problem of providing safe and affordable transportation from Denver to all of the ski resorts to the west along Interstate 70.



Our SmartSkyWays concept car to be operated as a fully automated APM/PRT



Our concept locomotive and tender for the Cripple Creek Railway in Colorado Springs, for the trip along the south side of Pike's Peak to Cripple Creek. This would operate as a series type hybrid, with a motor-generator set providing power to the electric drive motors on each axle.

CORPORATE CAPABILITIES

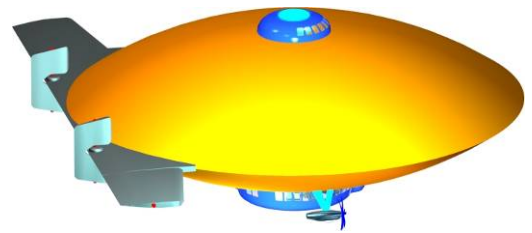
EEI/TIG are developers of Show and Ride Systems. We design them, and we also build them. And, we are very good at what we do, for our systems have unsurpassed reliability and safety,

We are even better at creating People Movers. Themed, customized, and following the Disney traditions of elegant styling and fine detailing that creates the classical beauty that you will find in all of our people movers.



TRANSPORTATION INNOVATIONS GROUP (TIG) is a division of EEI dedicated to designing and building custom vehicles for resorts, theme parks, and commercial developments. We and our associates have designed the following types of vehicles, and are prepared to produce new and improved versions of them for your needs:

- 1- Monorails.
- 2- Airships.
- 3- Custom road vehicles such as fire trucks, omnibuses, carriages, etc.
- 4- Trams and road trains such as Disney parking lot trams and Universal Studios trams.
- 5- Hydrogen powered electric vehicles.
- 6- Inductively charged, battery powered electric vehicles.
- 7- Automated vehicle systems, both elevated and on grade.
(www.smartskyways.com)
- 8- Steel wheeled trains and trolleys
<http://www.entenginc.com/whatwedo/images/FMT/FMT.html>
http://www.railwaypreservation.com/vintagetrolley/los_angeles.htm



The company was founded in 1987 by Kent Bingham. Mr. Bingham's background prior to founding EEI includes extensive experience in all aspects of Civil and Structural Engineering, highlighted by his six years at Walt Disney Imagineering as Chief Structural Engineer for the EPCOT project.

Currently EEI/TIG is working with the University of Nevada in Las Vegas as a consultant to their new Entertainment Engineering program.

The stated objective of this program is to teach students how to design and build anything that they can imagine.

